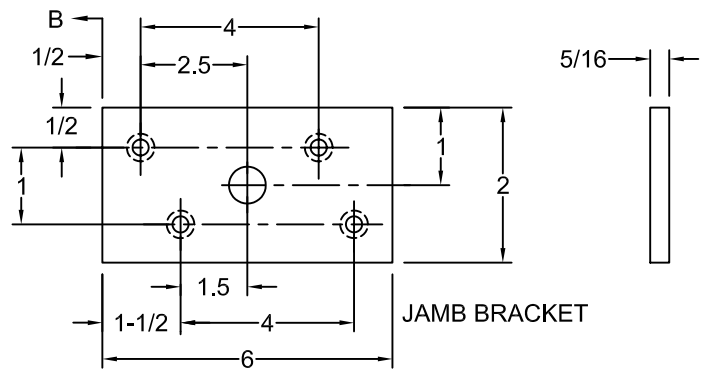
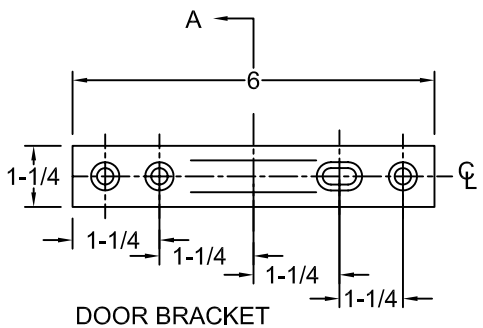
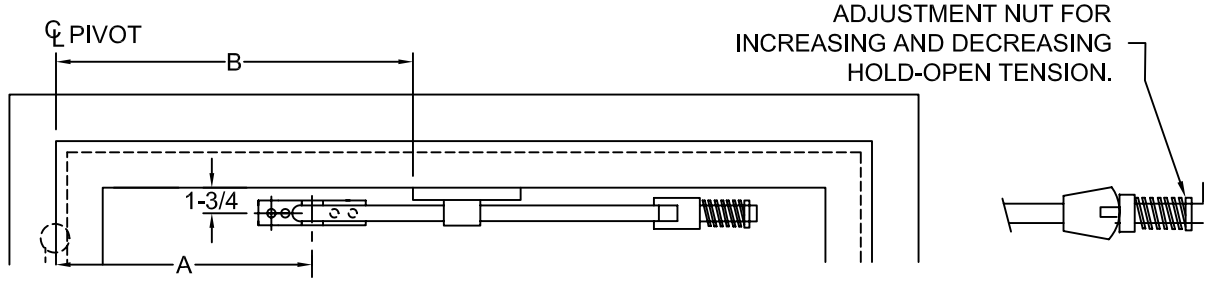
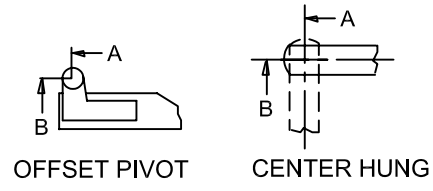
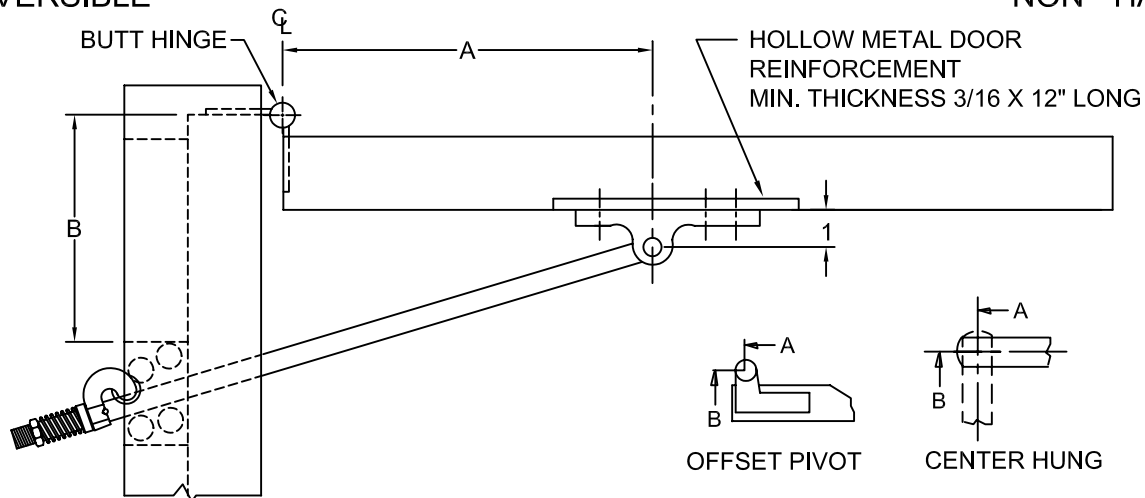


HD 7000 SERIES EXTRA HEAVY DUTY HOLDERS & STOPS

REVERSIBLE

NON - HANDED

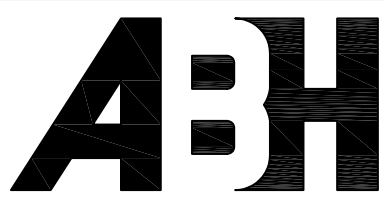


NOTE: ALL A & B DIMENSIONS MEASURED FROM ϕ OF PIVOT.

SCREW DETAIL			
	QTY	WOOD	METAL
JAMB	4	No. 18 X 2" F.H.W.S.	5/16" - 18 X 1" F.H.M.S.
DOOR	4	5/16"-18 TRUSS HD M.S. 1/2" DIA. SEX BOLT	5/16" - 18 TRUSS HD M.S. 1/2" DIA. SEX BOLT

ALWAYS REQUEST LATEST TEMPLATE DRAWINGS FOR NEW INSTALLATIONS

DO NOT SCALE DRAWINGS ALL DIMENSIONS ARE IN INCHES



© www.abhmfg.com
 E-mail: abhinfo@abhmfg.com
 Architectural Builders Hardware Mfg., Inc.
 1222 Ardmore Ave., Itasca, IL 60143
 630.875.9900; FAX 800.9FAXABH (932.9224)

© 2006 ABH Mfg., Inc.
 printed in USA

HD7000

REVISED 08-25-06

HD7000-1-01.DWG

HD7010 SERIES HOLDERS & HD7020 STOPS SURFACE MOUNTED

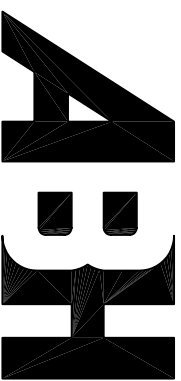
REVERSIBLE/ NON-HANDED
ALL DRILLING AND TAPPING TO BE DONE IN FIELD
ALL DIMENSIONS SHOWN IN INCHES

FOR SINGLE ACTING DOORS ONLY
FOR DEAD STOP MOUNT 5 DEG. LESS
THAN MAX. DOOR OPENING

DEGREE		85° H.O.	90° H.O.	95° H.O.	100° H.O.	105° H.O.	110° H.O.
MODEL NO.	DOOR OPENING	A	B	A	B	A	B
HD7010	24" TO 29- ¹⁵ / ₁₆ "	4-3/4	6-3/4	4-3/16	6-3/16	3-3/4	5-3/4
HD7020	24" TO 29- ¹⁵ / ₁₆ "	4-3/4	6-3/4	4-3/16	6-3/16	3-7/16	5-7/16
HD7011	30" TO 35- ¹⁵ / ₁₆ "	6-3/4	8-3/4	6-3/16	8-3/16	5-11/16	7-11/16
HD7021	30" TO 35- ¹⁵ / ₁₆ "	6-3/4	8-3/4	6-3/16	8-3/16	5-5/16	7-5/16
HD7012	36" TO 39- ¹⁵ / ₁₆ "	8-13/16	10-13/16	8-3/16	10-3/16	7-9/16	9-9/16
HD7022	36" TO 39- ¹⁵ / ₁₆ "	8-13/16	10-13/16	8-3/16	10-3/16	7-1/8	9-1/8
HD7013	40" TO 47- ¹⁵ / ₁₆ "	11-15/16	13-15/16	10-11/16	12-11/16	9-1/2	11-1/2
HD7023	40" TO 47- ¹⁵ / ₁₆ "	11-15/16	13-15/16	10-11/16	12-11/16	9-1/2	11-1/2
HD7014	48" - UP	13-15/16	15-15/16	13-3/16	15-3/16	12-1/2	14-1/2
HD7024	48" - UP	13-15/16	15-15/16	13-3/16	15-3/16	12-1/2	14-1/2

"A" & "B" DIMENSION MEASURED FROM CENTER OF PIVOT - NOT EDGE OF DOOR

DEGREE		85° H.O.	90° H.O.	95° H.O.	100° H.O.	105° H.O.	110° H.O.
MODEL NO.	DOOR OPENING	A	B	A	B	A	B
HD7010	26" TO 31- ¹⁵ / ₁₆ "	4-13/16	6-13/16	4-7/16	6-7/16	4-1/8	6-1/8
HD7020	26" TO 31- ¹⁵ / ₁₆ "	4-13/16	6-13/16	4-7/16	6-7/16	4-1/8	6-1/8
HD7011	32- ¹ / ₂ " TO 37- ¹ / ₁₆ "	6-13/16	8-13/16	6-5/16	8-5/16	6	8
HD7021	32- ¹ / ₂ " TO 37- ¹ / ₁₆ "	6-13/16	8-13/16	6-5/16	8-5/16	6	8
HD7012	38- ¹ / ₂ " TO 42- ¹⁵ / ₁₆ "	8-13/16	10-13/16	8-1/4	10-1/4	7-13/16	9-13/16
HD7022	38- ¹ / ₂ " TO 42- ¹⁵ / ₁₆ "	8-13/16	10-13/16	8-1/4	10-1/4	7-7/16	9-7/16
HD7013	43- ¹ / ₄ " TO 50- ¹⁵ / ₁₆ "	11-3/8	13-3/8	10-3/4	12-3/4	10-3/16	12-3/16
HD7023	43- ¹ / ₄ " TO 50- ¹⁵ / ₁₆ "	11-3/8	13-3/8	10-3/4	12-3/4	10-3/16	12-3/16
HD7014	51" & UP	14	16	13-1/4	15-1/4	12-9/16	14-9/16
HD7024	51" & UP	14	16	13-1/4	15-1/4	12-9/16	14-9/16



www.abhmf.com

E-mail: abhinfo@abhmf.com

Architectural Builders Hardware Mfg., Inc.

1222 Ardmore Ave., Itasca, IL 60143

630.875.9900; FAX 800.9FAXABH (932.9224)

ABH is a minority owned and operated manufacturing company.

©2004 ABH Mfg., Inc. printed in USA

HD7000-2-00.DWG

HD7000

ISSUED 06-21-04